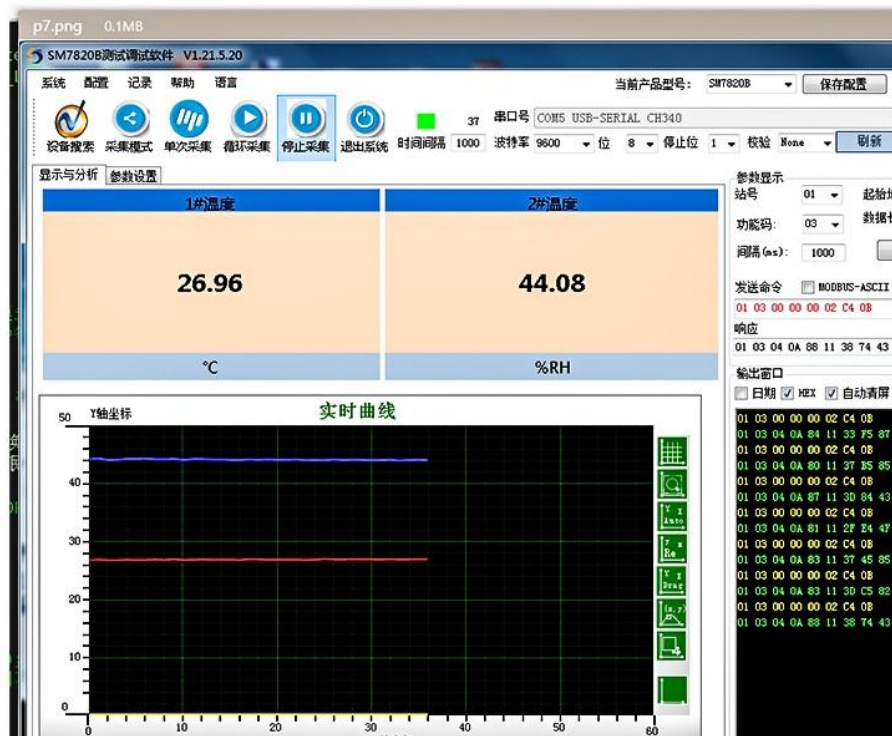


RV1000

RS485 product general debugging software

User Manual

File Version: V23.12.16



RV1000 using the standard ,easy access to PLC, DCS and other instruments or systems for monitoring temperature state quantities.The internal use of high-precision sensing core and related devices to ensure high reliability and excellent long-term stability,can be customized RS232,RS485,CAN,4-20mA,DC0~5V\10V,ZIGBEE,Lora,WIFI,GPRS and other output methods.

Technical Parameters

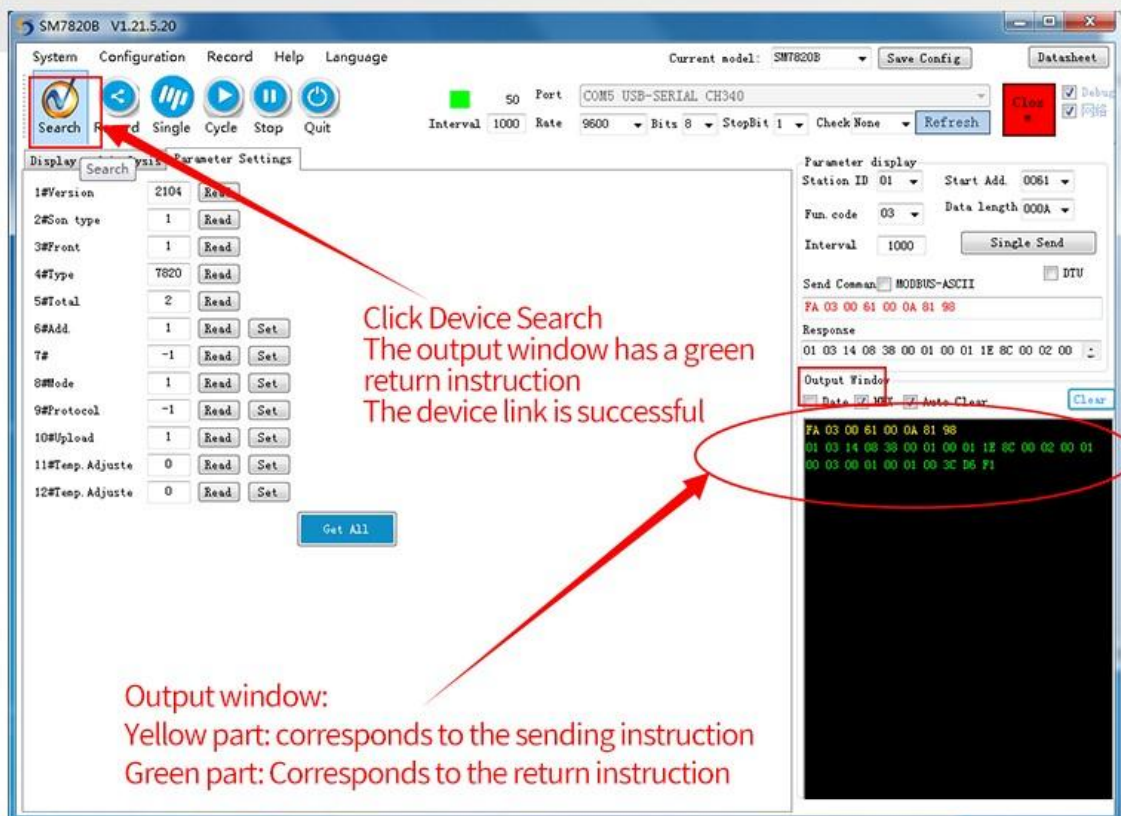
Technical parameter	Parameter value
Brand	SONBEST
Temperature measuring range	-30°C~85°C
Temperature measuring accuracy	±0.5°C @25°C
Running temperature	-30~85°C
Working humidity	5%RH~90%RH

In the case of broken wires, wire the wires as shown in the figure. If the product itself has no leads, the core color is for reference.

Application solution

Device search

If the output window has green return data, the device connection is successful

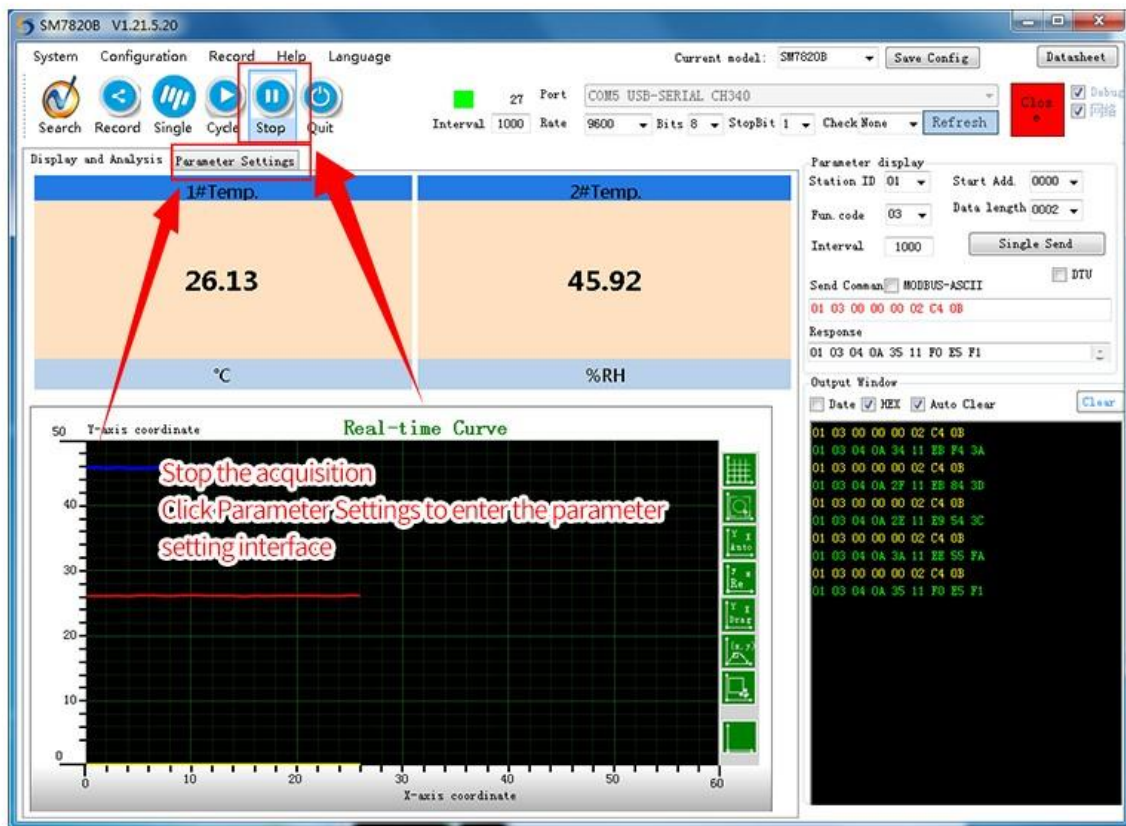


Click Loop Acquisition to collect data

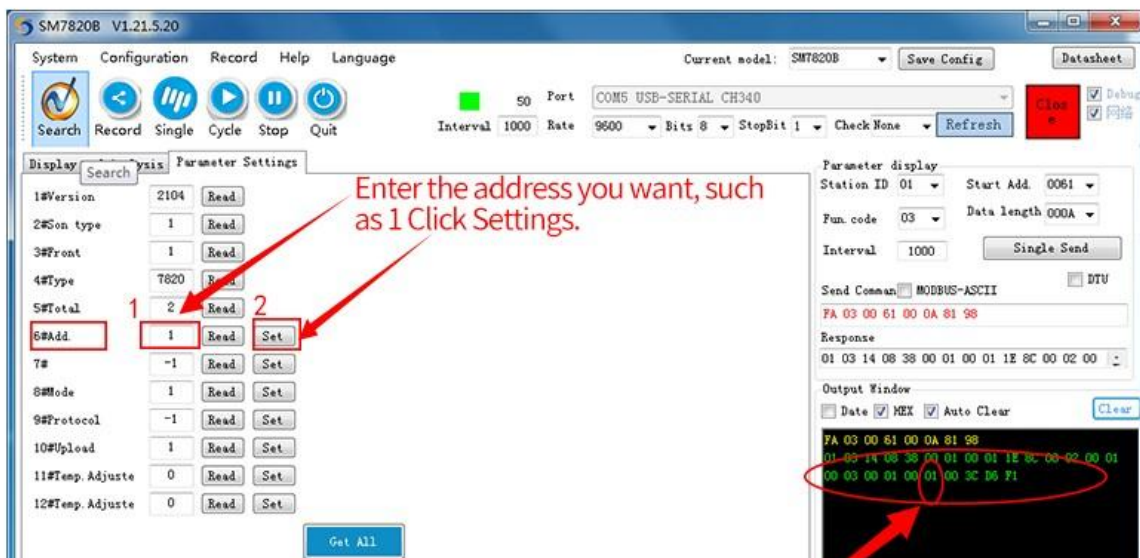


Modify device parameters

Click Stop Collection Click Parameter Settings



Modify the sensor address



Read the current baud rate

3 corresponds to 9600 4 is 19200

Click "Read", 3 after the baud rate
This corresponds to a default baud rate of 9600

Parameter	Value	Read	Set
1#Version	2104	Read	
2#Son type	1	Read	
3#Front	1	Read	
4#Type	7820	Read	
5#Total	2	Read	
6#Add.	5	Read	Set
7#	3	Read	Set
8#Mode	1	Read	Set
9#Protocol	-1	Read	Set
10#Upload	1	Read	Set
11#Temp. Adjuste	0	Read	Set
12#Temp. Adjuste	0	Read	Set

Parameter display

Station ID 05 Start Add. 0067

Fun. code 03 Data length 0001

Interval 1000 Single Send

Send Command MODBUS-ASCII DTU

Response

05 03 02 00 03 09 85

Output Window

05 03 00 67 00 01 34 51
05 03 02 00 03 09 85

Modify the baud rate

1. Enter the 4 baud rate serial number
2. Click "Settings" and the output window will return The sixth byte of the instruction is 04, followed by an input sequence number If the baud rate is set successfully

serial number	Daud rate
1	2400
2	4800
3	9600
4	19200
5	38400
6	115200

```
05 03 00 67 00 01 34 51
05 03 00 00 00 00 00 35
05 06 00 67 00 04 38 52
05 06 00 67 00 04 38 52
```

Verify the baud rate

Concentrate:

1. Click to close the serial port
2. Set the baud rate to correspond to the serial number 4 Baud rate 19200
3. Open the serial port
4. Click Device Search, the output window has If the command is returned in green, the setting is successful

No case processing is returned for data

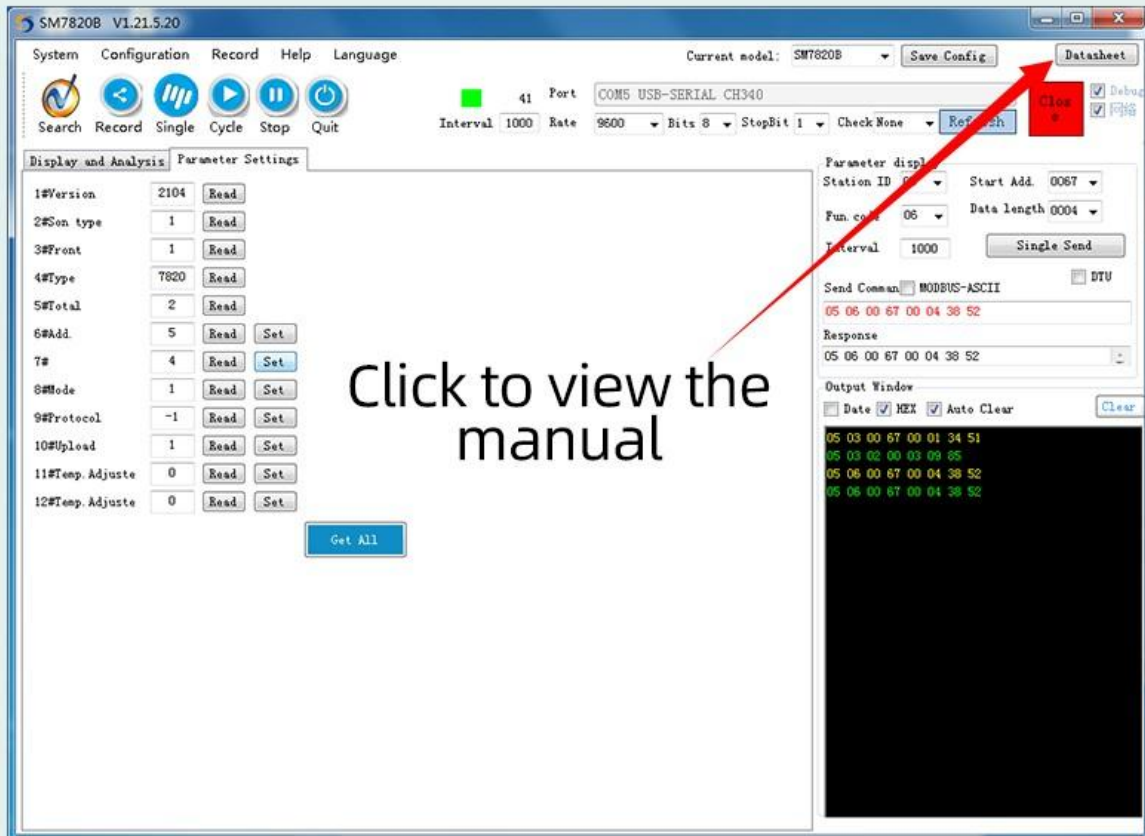
The screenshot shows the SM7820B V1.21.5.20 software interface. The main display area is divided into two columns for temperature data: '1#Temp.' showing 26.13 °C and '2#Temp.' showing 45.92 %RH. Below this is a 'Real-time Curve' graph with a Y-axis coordinate from 0 to 1 and an X-axis coordinate from 0 to 60. The graph area contains a text box with the following instructions:

Output window, please check when no green returns data

1. Check whether the wiring is normal
2. Check whether the power supply is available
3. Check whether the baud rate of the device is selected correctly
4. Check whether the USB/RS485 converter driver is installed
5. Check whether the port number is correct

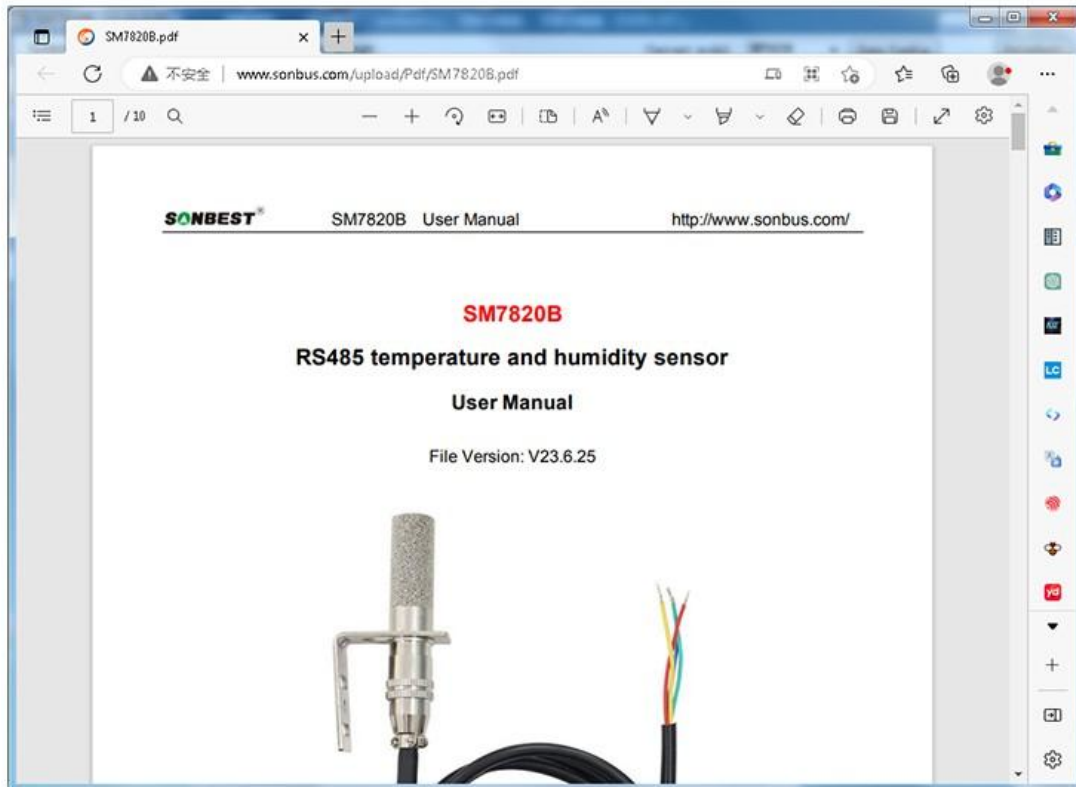
On the right side, the 'Parameter display' section shows settings for Station ID (05), Start Add. (0000), Fun. code (03), and Data length (0002). The 'Send Command' field contains '05 03 00 00 00 02 C5 8F'. The 'Output Window' at the bottom right shows a list of identical hex data strings: '05 03 00 00 00 02 C5 8F'. A red circle highlights this output window.

Product data sheet view



Product data sheet view

Click to view the manual



Disclaimer

This document provides all information about the product, does not grant any license to intellectual property, does not express or imply, and prohibits any other means of granting any intellectual property rights, such as the statement of sales terms and conditions of this product, other issues. No liability is assumed. Furthermore, our company makes no warranties, express or implied, regarding the sale and use of this product, including the suitability for the specific use of the product, the marketability or the infringement liability for any patent, copyright or other intellectual property rights, etc. Product specifications and product descriptions may be modified at any time without notice.

Contact Us

Company: Shanghai Sonbest Industrial Co., Ltd

Address: Building 8, No.215 North east road, Baoshan District, Shanghai, China

Web: <http://www.sonbest.com>

Web: <http://www.sonbus.com>

SKYPE: soobuu

Email: sale@sonbest.com

Tel: 86-021-51083595 / 66862055 / 66862075 / 66861077

