

QR9601B

Handheld infrared temperature recorder

User Manual

File Version: V23.5.16



QR9601B using the standard ,easy access to PLC, DCS and other instruments or systems for monitoring temperature state quantities.The internal use of high-precision sensing core and related devices to ensure high reliability and excellent long-term stability,can be customized RS232,RS485,CAN,4-20mA,DC0~5V\10V,ZIGBEE,Lora,WIFI,GPRS and other output methods.

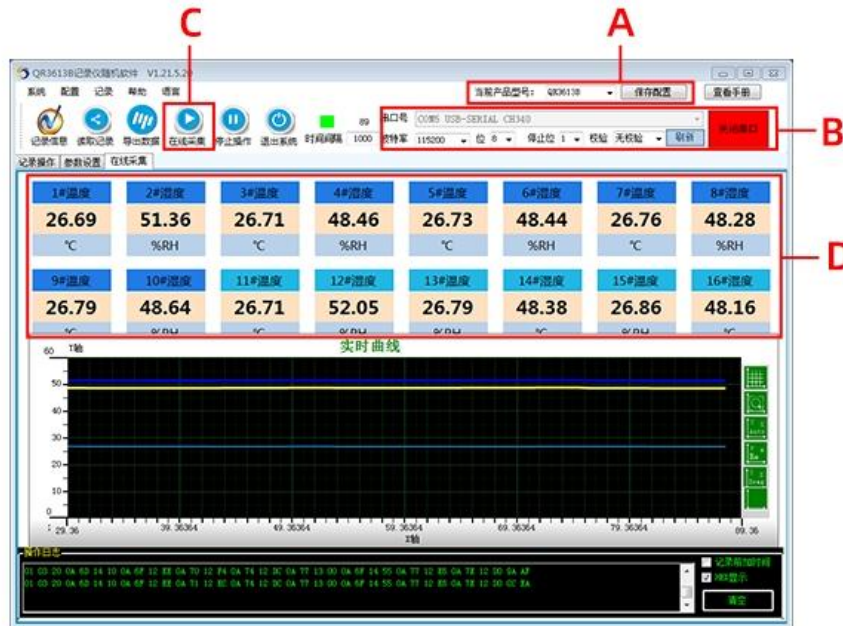
Technical Parameters

Technical parameter	Parameter value
Brand	TRANBALL
Temperature measurement range	0~+300°C (Max 380°C)
Temperature measurement accuracy	± 1 or %1 take the maximum value (maximum $\pm 3^\circ\text{C}$)
Repeat measurement accuracy	± 0.5 or %0.5 take the maximum value (maximum $\pm 2^\circ\text{C}$)
Optical Resolution	1.6:1
Spectral range	18-14um
Response time	100ms
Emissivity	0.96
Communication Interface	USB(RS232 to USB)
USB cable length	1m
Default baud rate	962000 8 n 1
Charger current	500mA
Work current	<150mA
Power off current	<30uA
Power	DC3.3~4.2V
Storage	8M
Max Records	65000
Running temperature	-30~85°C
Working humidity	5%RH~90%RH

Product Size



software to test

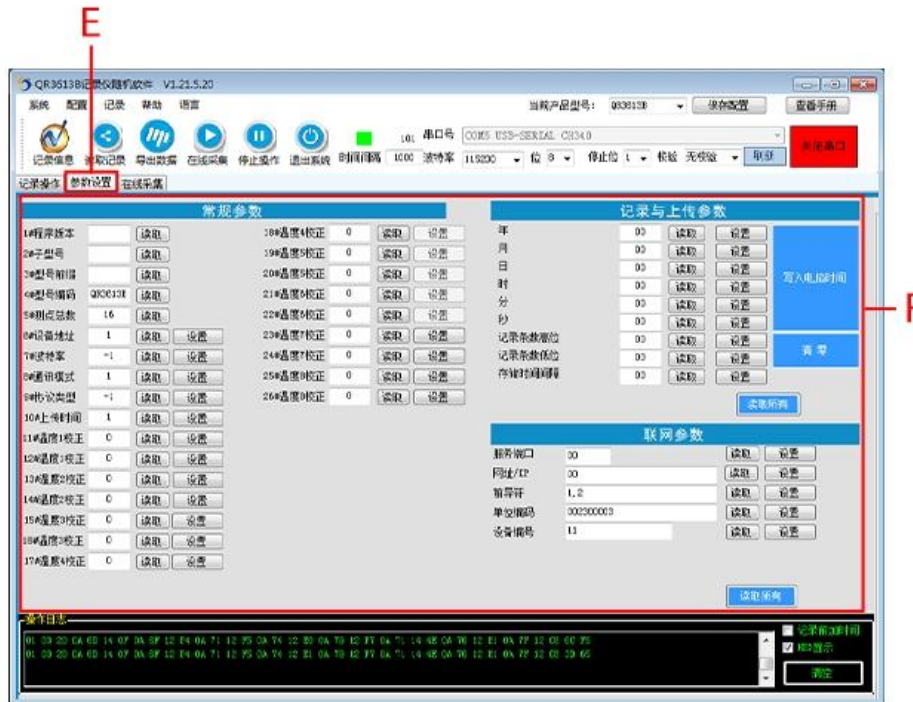


A:After opening the software, enter the main interface, select the corresponding product model at the time of purchase, and save the settings after selection, in case you need to reselect it after opening it next time.

B:Use the USB converter to insert the computer's USB2.0 interface, the driver will be installed automatically,If the installation fails, you can install it in the driver wizard software. After connecting to the computer,Select the serial port number: USB-SERIAL CH340 (COM5),set the baud rateClick to open the serial port to complete the connection.

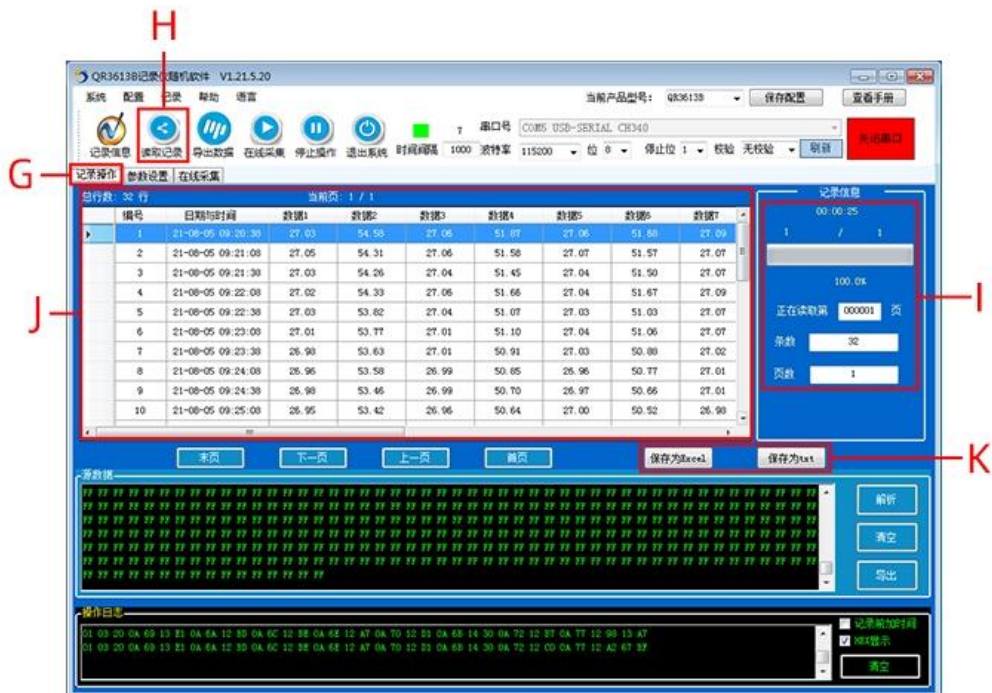
C:After opening the serial port, click online collection (C) to see the real-time measurement data (D).

D:Software data general display area, the actual display content varies from device to device.



E: Enter the parameter setting interface

F: A variety of parameters can be set in the parameter setting, such as temperature and humidity correction, baud rate, upload time and other parameters. For the parameters on the right, you can click on "read all" to set the parameters on the recorder.



G: Enter the record operation interface

H: Click "Read Data" to start transferring the data on the recorder to the software.

I: After the step (H), the number of read data, the total number of data, and the number of pages will be displayed at the top of the reading.

J: The read data will be displayed on it

K: You can export the read data in Excel or txt format

1	A	B	C	D	E	F	G	H	I	J	K	L	M	N	O	P	Q	R
1	ID	Time	1#湿度	2#湿度	3#湿度	4#湿度	5#湿度	6#湿度	7#湿度	8#湿度	9#湿度	10#湿度	11#湿度	12#湿度	13#湿度	14#湿度	15#湿度	16#湿度
2	1	2021/8/5 9:20	27.03	54.58	27.06	51.87	27.06	51.68	27.09	51.45	27.12	51.83	27.06	55.15	27.13	51.58	27.17	51.32
3	2	2021/8/5 9:21	27.05	54.31	27.06	51.58	27.07	51.57	27.07	51.37	27.09	51.71	27.07	55.11	27.1	51.48	27.18	51.22
4	3	2021/8/5 9:21	27.03	54.26	27.04	51.45	27.04	51.5	27.07	51.29	27.09	51.6	27.06	54.95	27.1	51.39	27.15	51.09
5	4	2021/8/5 9:22	27.02	54.33	27.06	51.66	27.04	51.67	27.09	51.3	27.1	51.66	27.07	55.02	27.09	51.41	27.14	51.09
6	5	2021/8/5 9:22	27.03	53.82	27.04	51.07	27.03	51.03	27.07	50.85	27.1	51.18	27.04	54.49	27.09	50.95	27.13	50.64
7	6	2021/8/5 9:23	27.01	53.77	27.01	51.1	27.04	51.06	27.07	50.85	27.09	51.17	27	54.44	27.06	50.89	27.1	50.69
8	7	2021/8/5 9:23	26.98	53.63	27.01	50.91	27.03	50.88	27.02	50.63	27.05	50.95	25.98	54.3	27.05	50.69	27.11	50.38
9	8	2021/8/5 9:24	26.96	53.58	26.99	50.85	26.96	50.77	27.01	50.66	27.03	50.92	25.97	54.33	27.02	50.77	27.1	50.46
10	9	2021/8/5 9:24	26.98	53.46	26.99	50.7	26.97	50.66	27.01	50.5	27.02	50.74	25.98	54.16	27.04	50.55	27.1	50.2
11	10	2021/8/5 9:25	26.95	53.42	26.96	50.64	27	50.52	26.98	50.29	27	50.62	25.98	53.95	27.04	50.42	27.07	50.17
12	11	2021/8/5 9:25	26.91	53.28	26.92	50.56	26.94	50.32	26.96	50.12	27	50.45	25.91	53.88	27.01	50.3	27.04	50.06
13	12	2021/8/5 9:25	26.91	53.14	26.92	50.43	26.93	50.3	26.96	50.09	26.96	50.42	25.93	53.97	27.01	50.27	27.03	49.99
14	13	2021/8/5 9:25	26.89	53.02	26.9	50.09	26.93	50.17	26.93	49.94	26.96	50.24	25.89	53.69	26.99	50.09	27.03	49.75
15	14	2021/8/5 9:27	26.85	52.7	26.87	49.92	26.93	49.92	26.91	49.68	26.95	49.93	25.89	53.39	26.95	49.81	27	49.48
16	15	2021/8/5 9:27	26.84	52.77	26.86	49.96	26.87	49.91	26.93	49.71	26.92	49.99	25.87	53.5	26.95	49.81	26.99	49.4
17	16	2021/8/5 9:28	26.85	52.5	26.82	49.5	26.87	49.44	26.88	49.17	26.9	49.55	25.84	53.01	26.91	49.31	26.99	49.06
18	17	2021/8/5 9:28	26.79	52.38	26.81	49.62	26.86	49.5	26.87	49.26	26.89	49.69	25.84	53.08	26.88	49.45	26.94	49.19
19	18	2021/8/5 9:29	26.79	52.17	26.81	49.39	26.83	49.32	26.87	49.07	26.86	49.43	26.8	52.88	26.91	49.23	26.94	48.94
20	19	2021/8/5 9:29	26.78	51.95	26.75	49.21	26.8	49.15	26.81	48.92	26.83	49.25	25.77	52.67	26.85	49.01	26.92	48.76
21	20	2021/8/5 9:30	26.75	51.98	26.75	49.2	26.77	49.1	26.8	48.89	26.82	49.29	25.76	52.77	26.84	49.04	26.92	48.79
22	21	2021/8/5 9:30	26.75	51.95	26.73	49.1	26.75	49.02	26.77	48.75	26.79	49.09	25.74	52.59	26.84	48.88	26.89	48.63
23	22	2021/8/5 9:31	26.74	51.71	26.72	48.92	26.76	48.86	26.8	48.69	26.79	49.01	25.74	52.5	26.84	48.82	26.85	48.69
24	23	2021/8/5 9:31	26.72	51.73	26.71	48.91	26.76	48.86	26.76	48.69	26.81	49.08	25.74	52.49	26.81	48.87	26.85	48.61
25	24	2021/8/5 9:32	26.68	51.3	26.71	48.91	26.76	48.86	26.76	48.69	26.81	49.08	25.74	52.49	26.81	48.87	26.85	48.61
26	25	2021/8/5 9:33	26.56	51.23	26.71	48.91	26.76	48.86	26.76	48.69	26.81	49.08	25.74	52.49	26.81	48.87	26.85	48.61
27	26	2021/8/5 9:33	26.72	51.59	26.78	48.69	26.75	48.66	26.78	48.37	26.79	48.9	25.73	52.32	26.81	48.62	26.85	48.45
28	27	2021/8/5 9:34	26.72	51.5	26.72	48.66	26.73	48.66	26.74	48.38	26.78	48.73	26.7	52.17	26.81	48.49	26.85	48.2
29	28	2021/8/5 9:34	26.71	51.35	26.71	48.46	26.72	48.52	26.76	48.38	26.76	48.65	25.71	52.09	26.81	48.49	26.89	48.14
30	29	2021/8/5 9:35	26.68	51.47	26.71	48.65	26.73	48.68	26.76	48.51	26.77	48.89	25.73	52.3	26.77	48.46	26.85	48.21
31	30	2021/8/5 9:32	26.69	51.12	26.71	48.91	26.76	48.86	26.76	48.69	26.81	49.08	25.74	52.49	26.81	48.87	26.85	48.61
32	31	2021/8/5 9:37	26.69	51.07	26.71	48.16	26.69	48.09	26.71	47.93	26.75	48.24	26.7	51.74	26.78	48.09	26.83	47.84
33	32	2021/8/5 9:37	26.68	51.09	26.68	48.18	26.69	48.19	26.71	47.94	26.74	48.25	26.7	51.75	26.74	48.08	26.79	47.77

EXCEL table export preview

文本 - 记事本

文件(F) 编辑(E) 格式(O) 查看(V) 帮助(H)

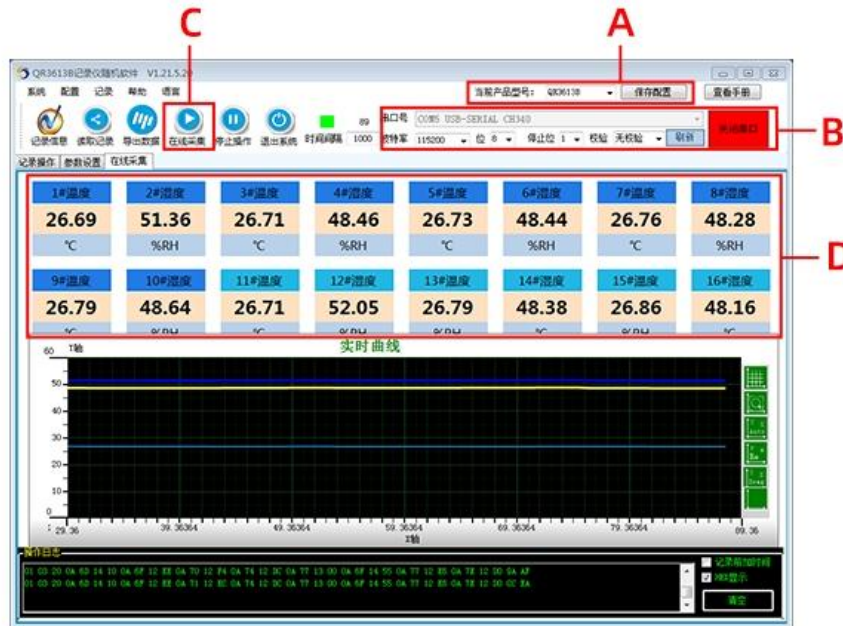
```

序号 时间标识 1#湿度 2#湿度 3#湿度 4#湿度 5#湿度 6#湿度 7#湿度 8#湿度 9#湿度 10#湿度 11#湿度 12#湿度 13#湿度 14#湿度 15#湿度 16#湿度
1 21-08-05 09:20:38 27.03 54.58 27.06 51.87 27.06 51.68 27.09 51.45 27.12 51.83 27.06 55.15 27.13 51.58 27.17 51.32
2 21-08-05 09:21:08 27.05 54.31 27.06 51.58 27.07 51.57 27.07 51.37 27.09 51.71 27.07 55.11 27.1 51.48 27.18 51.22
3 21-08-05 09:21:38 27.03 54.26 27.04 51.45 27.04 51.5 27.07 51.29 27.09 51.6 27.06 54.95 27.1 51.39 27.15 51.09
4 21-08-05 09:22:08 27.02 54.33 27.06 51.66 27.04 51.67 27.09 51.3 27.1 51.66 27.07 55.02 27.09 51.41 27.14 51.09
5 21-08-05 09:22:38 27.03 53.82 27.04 51.07 27.03 51.03 27.07 50.85 27.1 51.18 27.04 54.49 27.09 50.95 27.13 50.64
6 21-08-05 09:23:08 27.01 53.77 27.01 51.1 27.04 51.06 27.07 50.85 27.09 51.17 27.06 54.44 27.06 50.89 27.11 50.69
7 21-08-05 09:23:38 26.98 53.63 27.01 50.91 27.03 50.88 27.02 50.63 27.05 50.95 26.98 54.3 27.05 50.69 27.1 50.38
8 21-08-05 09:24:08 26.96 53.58 26.99 50.85 26.96 50.77 27.01 50.66 27.03 50.92 26.97 54.33 27.02 50.77 27.1 50.46
9 21-08-05 09:24:38 26.98 53.46 26.99 50.7 26.97 50.66 27.01 50.5 27.02 50.74 26.98 54.16 27.04 50.55 27.1 50.2
10 21-08-05 09:25:08 26.95 53.42 26.96 50.64 27.00 50.52 26.98 50.29 27.00 50.62 26.98 53.95 27.04 50.42 27.07 50.17
11 21-08-05 09:25:38 26.91 53.28 26.92 50.56 26.94 50.32 26.96 50.12 27.00 50.45 26.91 53.88 27.01 50.3 27.04 50.06
12 21-08-05 09:26:08 26.91 53.14 26.92 50.43 26.93 50.3 26.96 50.09 26.96 50.42 25.93 53.97 27.01 50.27 27.03 49.99
13 21-08-05 09:26:38 26.89 53.02 26.9 50.09 26.93 50.17 26.93 49.94 26.96 50.24 26.89 53.69 26.99 50.09 27.03 49.75
14 21-08-05 09:27:08 26.85 52.7 26.87 49.92 26.93 49.92 26.91 49.68 26.95 49.93 26.89 53.39 26.95 49.81 27.03 49.48
15 21-08-05 09:27:38 26.84 52.77 26.86 49.96 26.87 49.91 26.93 49.71 26.92 49.99 26.87 53.5 26.95 49.81 26.99 49.4
16 21-08-05 09:28:08 26.85 52.5 26.82 49.5 26.87 49.44 26.88 49.17 26.9 49.55 26.84 53.01 26.91 49.31 26.99 49.06
17 21-08-05 09:28:38 26.79 52.38 26.81 49.62 26.86 49.5 26.87 49.26 26.89 49.69 26.84 53.08 26.88 49.45 26.94 49.19
18 21-08-05 09:29:08 26.79 52.17 26.81 49.39 26.83 49.32 26.87 49.07 26.86 49.43 26.80 52.88 26.91 49.23 26.94 48.94
19 21-08-05 09:29:38 26.78 51.95 26.75 49.21 26.80 49.15 26.81 48.92 26.83 49.25 26.77 52.67 26.85 49.01 26.92 48.76
20 21-08-05 09:30:10 26.75 51.98 26.75 49.2 26.77 49.1 26.80 48.89 26.82 49.29 26.76 52.77 26.84 49.04 26.92 48.79
21 21-08-05 09:30:40 26.75 51.95 26.73 49.1 26.75 49.02 26.77 48.75 26.79 49.09 26.74 52.59 26.84 48.88 26.89 48.63
22 21-08-05 09:31:11 26.74 51.71 26.72 48.92 26.76 48.86 26.80 48.69 26.79 49.01 26.74 52.50 26.84 48.82 26.86 48.48
23 21-08-05 09:31:41 26.72 51.73 26.71 48.91 26.76 48.86 26.76 48.69 26.81 49.08 26.74 52.49 26.81 48.87 26.85 48.61
24 21-08-05 09:32:11 26.68 51.3 26.71 48.91 26.76 48.86 26.76 48.69 26.81 49.08 26.74 52.49 26.81 48.87 26.85 48.61
25 21-08-05 09:33:00 26.56 51.23 26.71 48.91 26.76 48.86 26.76 48.69 26.81 49.08 26.74 52.49 26.81 48.87 26.85 48.61
26 21-08-05 09:33:52 26.72 51.59 26.73 48.69 26.75 48.66 26.74 48.38 26.78 48.73 26.70 52.32 26.81 48.62 26.85 48.45
27 21-08-05 09:34:22 26.72 51.50 26.72 48.66 26.73 48.66 26.74 48.38 26.78 48.73 26.70 52.17 26.81 48.49 26.86 48.20
28 21-08-05 09:34:53 26.71 51.35 26.71 48.46 26.72 48.52 26.76 48.38 26.75 48.66 26.71 52.09 26.81 48.43 26.89 48.14
29 21-08-05 09:35:23 26.68 51.47 26.71 48.65 26.73 48.68 26.76 48.51 26.77 48.89 26.73 52.30 26.77 48.46 26.85 48.21
30 21-08-05 09:32:48 26.69 41.12 26.71 48.91 26.76 48.86 26.76 48.69 26.81 49.08 26.74 52.49 26.81 48.87 26.85 48.61
31 21-08-05 09:37:27 26.69 51.07 26.71 48.16 26.69 48.09 26.71 47.93 26.75 48.24 26.70 51.74 26.78 48.09 26.83 47.84
32 21-08-05 09:37:57 26.68 51.09 26.68 48.18 26.69 48.19 26.71 47.94 26.74 48.25 26.7 51.75 26.74 48.08 26.79 47.77

```

TXT text export preview

How to use software?

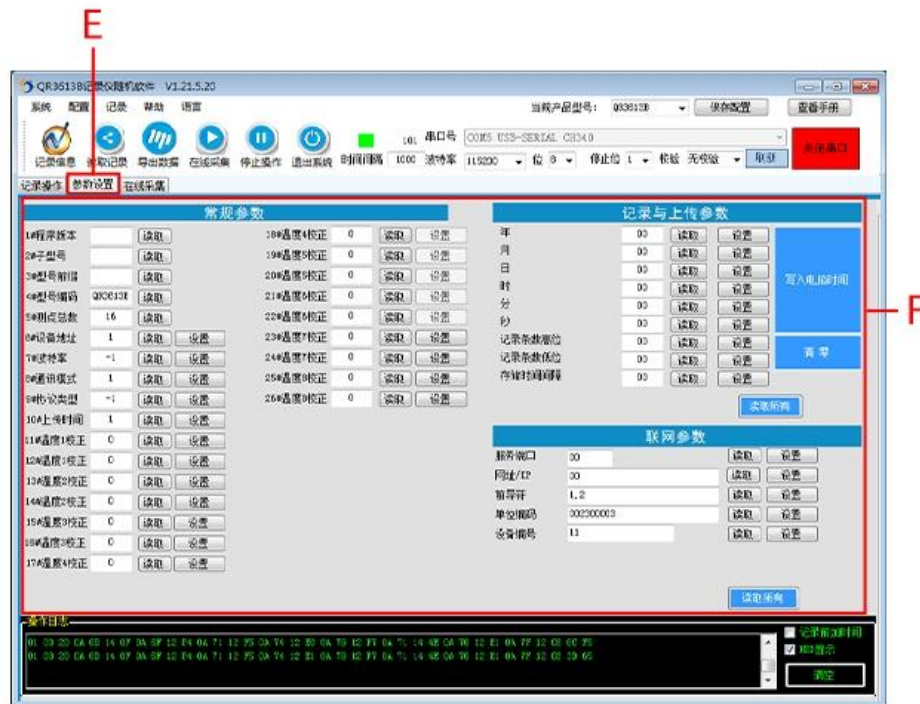


A:After opening the software, enter the main interface, select the corresponding product model at the time of purchase, and save the settings after selection, in case you need to reselect it after opening it next time.

B:Use the USB converter to insert the computer's USB2.0 interface, the driver will be installed automatically,If the installation fails, you can install it in the driver wizard software. After connecting to the computer,Select the serial port number: USB-SERIAL CH340 (COM5),set the baud rateClick to open the serial port to complete the connection.

C:After opening the serial port, click online collection (C) to see the real-time measurement data (D).

D:Software data general display area, the actual display content varies from device to device.



E: Enter the parameter setting interface

F: A variety of parameters can be set in the parameter setting, such as temperature and humidity correction, baud rate, upload time and other parameters. For the parameters on the right, you can click on "read all" to set the parameters on the recorder.



G: Enter the record operation interface

H: Click "Read Data" to start transferring the data on the recorder to the software.

I: After the step (H), the number of read data, the total number of data, and the number of pages will be displayed at the top of the reading.

J: The read data will be displayed on it

K: You can export the read data in Excel or txt format

	A	B	C	D	E	F	G	H	I	J	K	L	M	N	O	P	Q	R
1	ID	Time	1#湿度	2#湿度	3#湿度	4#湿度	5#湿度	6#湿度	7#湿度	8#湿度	9#湿度	10#湿度	11#湿度	12#湿度	13#湿度	14#湿度	15#湿度	16#湿度
2	1	2021/8/5 9:20	27.03	54.58	27.06	51.87	27.06	51.68	27.09	51.45	27.12	51.83	27.06	55.15	27.13	51.58	27.17	51.32
3	2	2021/8/5 9:21	27.05	54.31	27.06	51.58	27.07	51.57	27.07	51.37	27.09	51.71	27.07	55.11	27.1	51.48	27.18	51.22
4	3	2021/8/5 9:21	27.03	54.26	27.04	51.45	27.04	51.5	27.07	51.29	27.09	51.6	27.06	54.95	27.1	51.39	27.15	51.09
5	4	2021/8/5 9:22	27.02	54.33	27.06	51.66	27.04	51.67	27.09	51.3	27.1	51.66	27.07	55.02	27.09	51.41	27.14	51.09
6	5	2021/8/5 9:22	27.03	53.82	27.04	51.07	27.03	51.03	27.07	50.85	27.1	51.18	27.04	54.49	27.09	50.95	27.13	50.64
7	6	2021/8/5 9:23	27.01	53.77	27.01	51.1	27.04	51.06	27.07	50.85	27.09	51.17	27	54.44	27.06	50.89	27.1	50.69
8	7	2021/8/5 9:23	26.98	53.63	27.01	50.91	27.03	50.88	27.02	50.63	27.05	50.95	25.98	54.3	27.05	50.69	27.11	50.38
9	8	2021/8/5 9:24	26.96	53.58	26.99	50.85	26.96	50.77	27.01	50.66	27.03	50.92	25.97	54.33	27.02	50.77	27.1	50.46
10	9	2021/8/5 9:24	26.98	53.46	26.99	50.7	26.97	50.66	27.01	50.5	27.02	50.74	25.98	54.16	27.04	50.55	27.1	50.2
11	10	2021/8/5 9:25	26.95	53.42	26.96	50.64	27	50.52	26.98	50.29	27	50.62	25.98	53.95	27.04	50.42	27.07	50.17
12	11	2021/8/5 9:25	26.91	53.28	26.92	50.56	26.94	50.32	26.96	50.12	27	50.45	25.91	53.88	27.01	50.3	27.04	50.06
13	12	2021/8/5 9:25	26.91	53.14	26.92	50.43	26.93	50.3	26.96	50.09	26.96	50.42	25.93	53.97	27.01	50.27	27.03	49.99
14	13	2021/8/5 9:25	26.89	53.02	26.9	50.09	26.93	50.17	26.93	49.94	26.96	50.24	25.89	53.69	26.99	50.09	27.03	49.75
15	14	2021/8/5 9:27	26.85	52.7	26.87	49.92	26.93	49.92	26.91	49.68	26.95	49.93	25.89	53.39	26.95	49.81	27	49.48
16	15	2021/8/5 9:27	26.84	52.77	26.86	49.96	26.87	49.91	26.93	49.71	26.92	49.99	25.87	53.5	26.95	49.81	26.99	49.4
17	16	2021/8/5 9:28	26.85	52.5	26.82	49.5	26.87	49.44	26.88	49.17	26.9	49.55	25.84	53.01	26.91	49.31	26.99	49.06
18	17	2021/8/5 9:28	26.79	52.38	26.81	49.62	26.86	49.5	26.87	49.26	26.89	49.69	25.84	53.08	26.88	49.45	26.94	49.19
19	18	2021/8/5 9:29	26.79	52.17	26.81	49.39	26.83	49.32	26.87	49.07	26.86	49.43	26.8	52.88	26.91	49.23	26.94	48.94
20	19	2021/8/5 9:29	26.78	51.95	26.75	49.21	26.8	49.15	26.81	48.92	26.83	49.25	25.77	52.67	26.85	49.01	26.92	48.76
21	20	2021/8/5 9:30	26.75	51.98	26.75	49.2	26.77	49.1	26.8	48.89	26.82	49.29	25.76	52.77	26.84	49.04	26.92	48.79
22	21	2021/8/5 9:30	26.75	51.95	26.73	49.1	26.75	49.02	26.77	48.75	26.79	49.09	25.74	52.59	26.84	48.88	26.89	48.63
23	22	2021/8/5 9:31	26.74	51.71	26.72	48.92	26.76	48.86	26.8	48.69	26.79	49.01	25.74	52.5	26.84	48.82	26.85	48.69
24	23	2021/8/5 9:31	26.72	51.73	26.71	48.91	26.76	48.86	26.76	48.69	26.81	49.08	25.74	52.49	26.81	48.87	26.85	48.61
25	24	2021/8/5 9:32	26.68	51.5	26.71	48.91	26.76	48.86	26.76	48.69	26.81	49.08	25.74	52.49	26.81	48.87	26.85	48.61
26	25	2021/8/5 9:33	26.56	51.23	26.71	48.91	26.76	48.86	26.76	48.69	26.81	49.08	25.74	52.49	26.81	48.87	26.85	48.61
27	26	2021/8/5 9:33	26.72	51.59	26.78	48.69	26.75	48.66	26.78	48.37	26.79	48.9	25.73	52.32	26.81	48.62	26.85	48.45
28	27	2021/8/5 9:34	26.72	51.5	26.72	48.66	26.73	48.66	26.74	48.38	26.78	48.73	26.7	52.17	26.81	48.49	26.85	48.2
29	28	2021/8/5 9:34	26.71	51.35	26.71	48.46	26.72	48.52	26.76	48.38	26.76	48.65	25.71	52.09	26.81	48.49	26.89	48.14
30	29	2021/8/5 9:35	26.68	51.47	26.71	48.65	26.73	48.68	26.76	48.51	26.77	48.89	25.73	52.3	26.77	48.46	26.85	48.21
31	30	2021/8/5 9:32	26.69	51.12	26.71	48.91	26.76	48.86	26.76	48.69	26.81	49.08	25.74	52.49	26.81	48.87	26.85	48.61
32	31	2021/8/5 9:37	26.69	51.07	26.71	48.16	26.69	48.09	26.71	47.93	26.75	48.24	26.7	51.74	26.78	48.09	26.83	47.84
33	32	2021/8/5 9:37	26.68	51.09	26.68	48.18	26.69	48.19	26.71	47.94	26.74	48.25	26.7	51.75	26.74	48.08	26.79	47.77

EXCEL table export preview

TXT text export preview

How to use?





Product List

Disclaimer

This document provides all information about the product, does not grant any license to intellectual property, does not express or imply, and prohibits any other means of granting any intellectual property rights, such as the statement of sales terms and conditions of this product, other issues. No liability is assumed. Furthermore, our company makes no warranties, express or implied, regarding the sale and use of this product, including the suitability for the specific use of the product, the marketability or the infringement liability for any patent, copyright or other intellectual property rights, etc. Product specifications and product descriptions may be modified at any time without notice.

Contact Us

Company: Shanghai Sonbest Industrial Co., Ltd TRANBALL Brand Division
Address: Building 8, No.215 North east road, Baoshan District, Shanghai, China
Web: <http://www.qunbao.com>
Web: <http://www.tranball.com>
SKYPE: soobuu
Email: sale@sonbest.com
Tel: 86-021-51083595 / 66862055 / 66862075 / 66861077