

# SLET5000



[http:// www.sonbus.com](http://www.sonbus.com)

## Field data temperature collection server

### Product Overview

SLET5000 field data temperature collection server with high strength and high impact resistance protection box, the box sealed super, waterproof, moistureproof, dampproof. Products are widely used in field research, scientific detection, fire, outdoor and other areas of environmental monitoring.

### Parameters

Parameter	Value
Supply voltage	DC 12.6V
screen size	7 inch
Screen Resolution	1280 * 800 pixels
RAM	2GB
hard disk	32GB
system	Windows8.1
Life time	> 2 hours
Communication method	RS485 * 3, USB * 2, Ethernet, WIFI, Bluetooth
Operating environment temperature and humidity	0 ° C to 40 ° C, 0% RH to 80% RH,
Storage environment temperature and humidity	-10 ° C to 70 ° C, 0% RH to 80% RH
Dimensions	330 * 265 * 130mm
Protection class	IP67 (closed lid seal state)



### ORDERING INFORMATION

Type	Order No.
SLET5000	SLET5000

### Interface Description



### Interface Description



## Interface Description

Interface the pin is defined as follows:

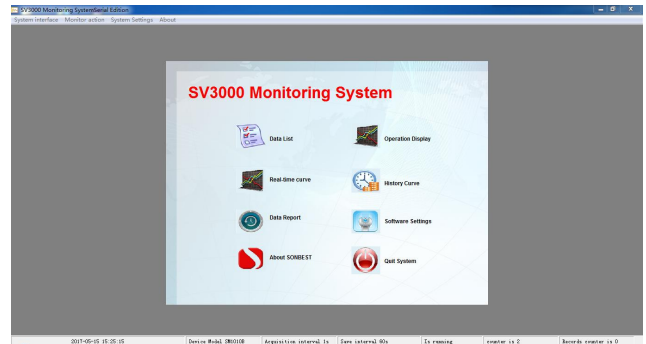
NO.	Name	Features
1	Master switch	The total power switch inside the device
2	Power button	Device power on button
3	USB-1	USB interface 1
4	USB-2	USB interface 2
5	RS485-1	RS485 interface 1
6	RS485-2	RS485 interface 2
7	Power indicator light	Displays the remaining battery power inside the device
8	Ethernet port	Ethernet interface
9	Power interface-1	Equipment external power supply and charging interface
10	Screen	Screen display area
11	Pressure balance valve	Automatic adjustment of air pressure balance
12	Power interface -0	Equipment external power supply and charging interface
13	RS485-3	RS485 interface 3

## Equipment wiring



## Device boot

First open the main switch (1) open, and then long press the power button (2), until the screen appears after the release button, boot into the desktop, wait about 20 seconds, the software automatically run.



The picture is divided into six main functions:

- (1) Data list
- (2) Operation Display
- (3) Real-time curve
- (4) Historical curve
- (5) Data reporting
- (6) Software settings

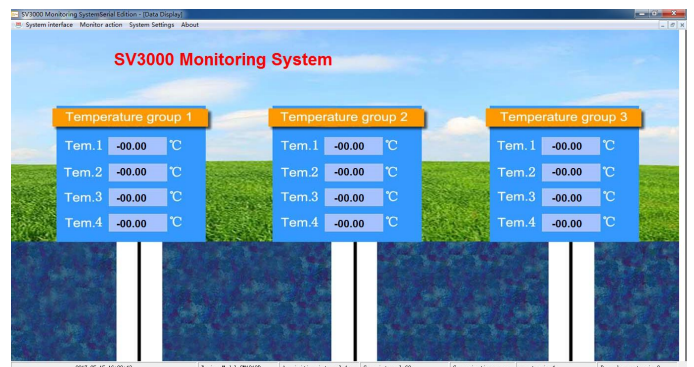
### (1) A list of points

No.	Name	Value	Unit	Top Rate	Bottom Rate	Upper and lower limits	Correction value	TimeDate
001010101	Device 1 Pressure 1	0	mm	---	---	50000	0	
001010102	Device 1 Pressure 2	0	mm	---	---	50000	0	
001010103	Device 1 Pressure 3	0	mm	---	---	50000	0	
001010104	Device 1 Pressure 4	0	mm	---	---	50000	0	
001010105	Device 1 Pressure 5	0	mm	---	---	50000	0	
001010106	Device 1 Pressure 6	0	mm	---	---	50000	0	
001010107	Device 1 Pressure 7	0	mm	---	---	50000	0	
001010108	Device 1 Pressure 8	0	mm	---	---	50000	0	
001010109	Device 1 Pressure 9	0	mm	---	---	50000	0	
001010110	Device 1 Pressure 10	0	mm	---	---	50000	0	
001010111	Device 1 Pressure 11	0	mm	---	---	50000	0	
001010112	Device 1 Pressure 12	0	mm	---	---	50000	0	
001010113	Device 1 Pressure 13	0	mm	---	---	50000	0	
001010114	Device 1 Pressure 14	0	mm	---	---	50000	0	
001010115	Device 1 Pressure 15	0	mm	---	---	50000	0	

The screen shows the current measurement of all equipment measurement points, each device default rotation 1 second refresh time.

You can set up or add devices and channels in the software settings.

- (2) Run the screen



The screen displays the measurement results and distribution of the current project.

