

SM1190B

Protective multi-channel DS18B20 and temperature and humidity acquisition module

User Manual

File Version: V23.7.4



SM1190B using the standard RS485 bus MODBUS-RTU protocol, easy access to PLC, DCS and other instruments or systems for monitoring temperature state quantities. The internal use of high-precision sensing core and related devices to ensure high reliability and excellent long-term stability, can be

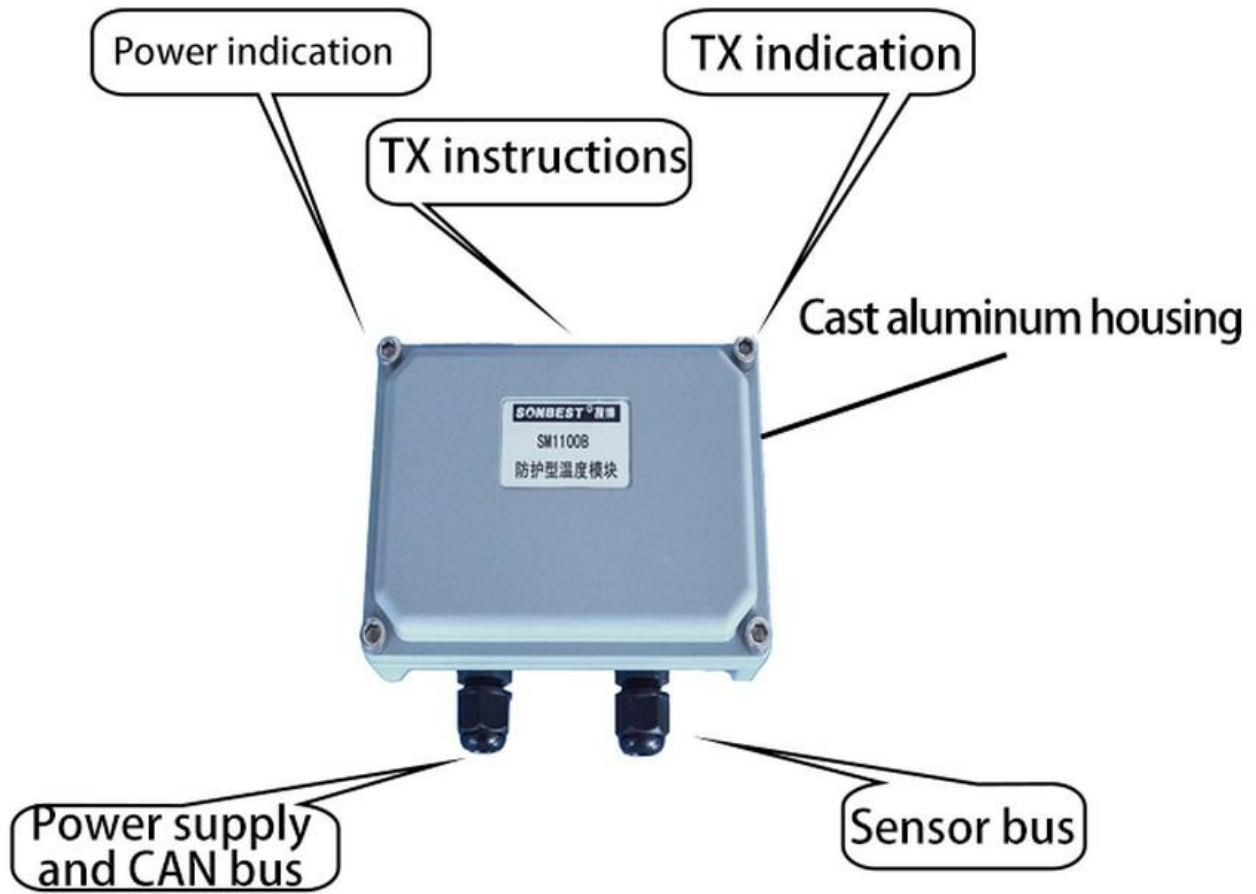
customized RS232,RS485,CAN,4-20mA,DC0~5V\10V,ZIGBEE,Lora,WIFI,GPRS and other output methods.

Technical Parameters

Technical parameter	Parameter value
Brand	SONBEST
Temperature measuring range	-30℃~85℃
Temperature measuring accuracy	±0.5℃ @25℃
Communication Interface	RS485
Default baud rate	9600 8 n 1
Power	DC9~24V 1A
Running temperature	-30~85℃
Working humidity	5%RH~90%RH

Product Size





CONNECTION MODE

Sensor wiring mode

V+	Power supply positive pole	V+	The sensor is powered by a positive electrode
V-	Power supply negative	D1	Channel 1 signal line
A+	RS485 A+	D4	Channel 4 signal line
B-	RS485 B-	V-	The sensor is powered by a negative electrode

※NOTE: WHEN WIRING FIRST POWER SUPPLY POSITIVE AND NEGATIVE, AFTER THE SIGNAL LINE

Wiring instructions

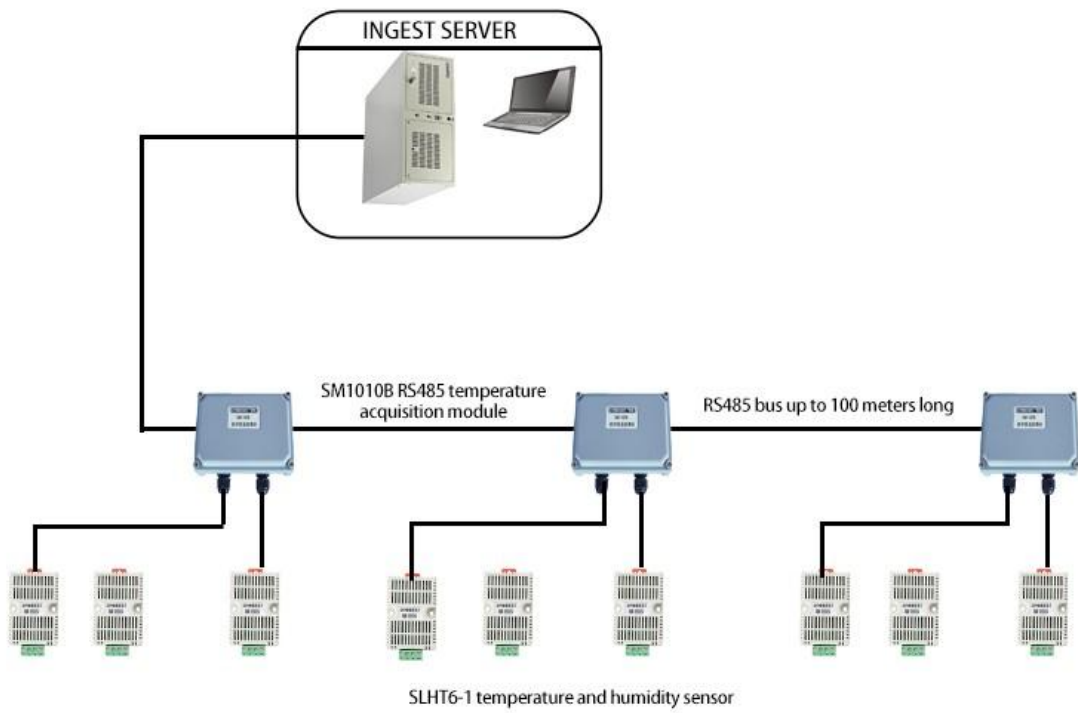
In the case of broken wires, wire the wires as shown in the figure. If the product itself has no leads, the core color is for reference.

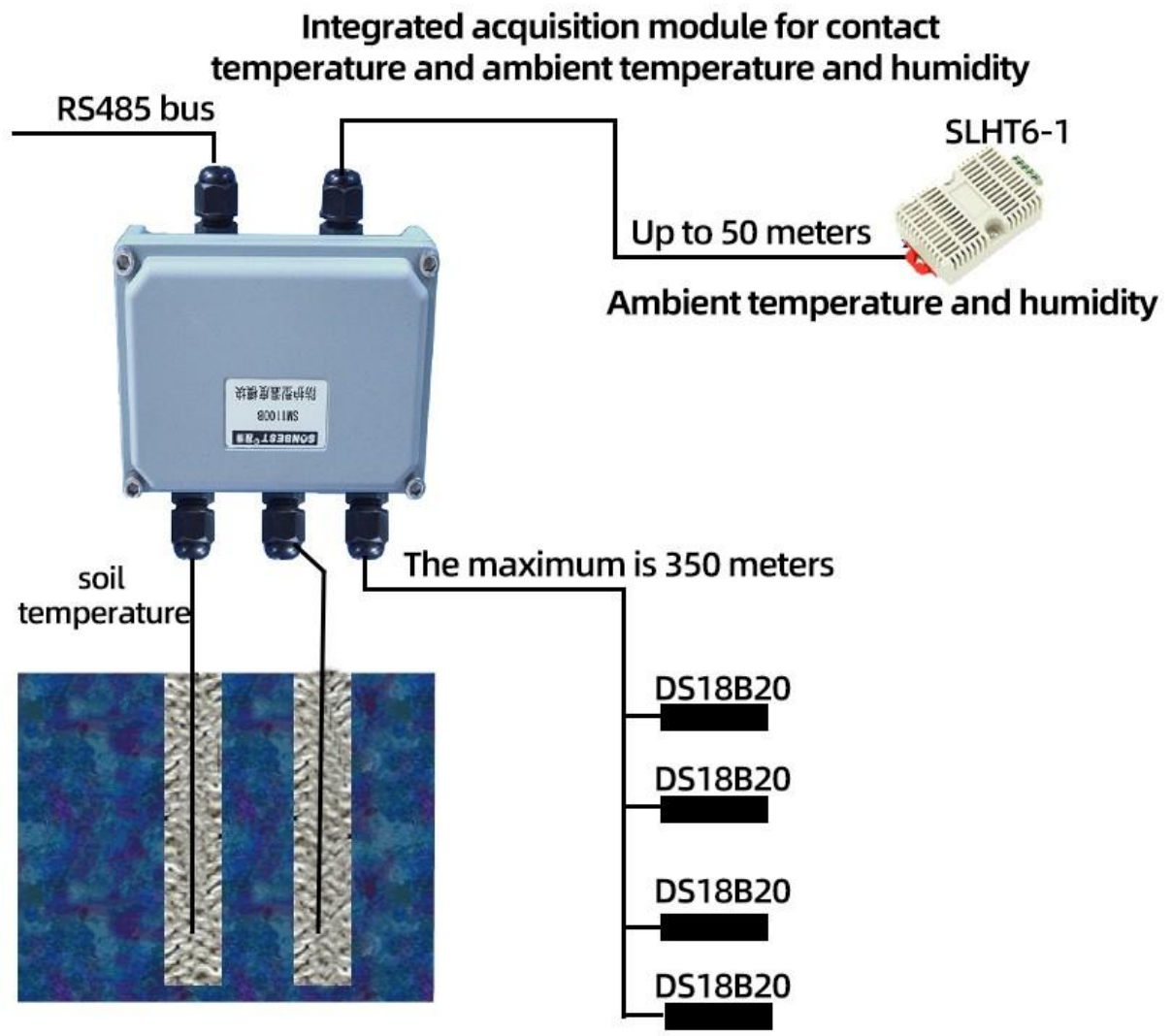
How to use?

The temperature acquisition module can be widely used in the field of indoor temperature measurement such as grain warehouse, heat source heat pump, machine shop, library, museum, Office, archives and so on



Application solution





Product List



SM1100B Protective
Temperature Module



Reminder card



Certificate

Communication Protocol Disclaimer

This document provides all information about the product, does not grant any license to intellectual property, does not express or imply, and prohibits any other means of granting any intellectual property rights, such as the statement of sales terms and conditions of this product, other issues. No liability is assumed. Furthermore, our company makes no warranties, express or implied, regarding the sale and use of this product, including the suitability for the specific use of the product, the marketability or the infringement liability for any patent, copyright or other intellectual property rights, etc. Product specifications and product descriptions may be modified at any time without notice.

Contact Us

Company: Shanghai Sonbest Industrial Co., Ltd

Address: Building 8, No.215 North east road, Baoshan District, Shanghai, China

Web: <http://www.sonbest.com>

Web: <http://www.sonbus.com>

SKYPE: soobuu

Email: sale@sonbest.com

Tel: 86-021-51083595 / 66862055 / 66862075 / 66861077