

**SR8878B****8-channel grain warehouse temperature and humidity data  
recorder****User Manual**

File Version: V23.6.24



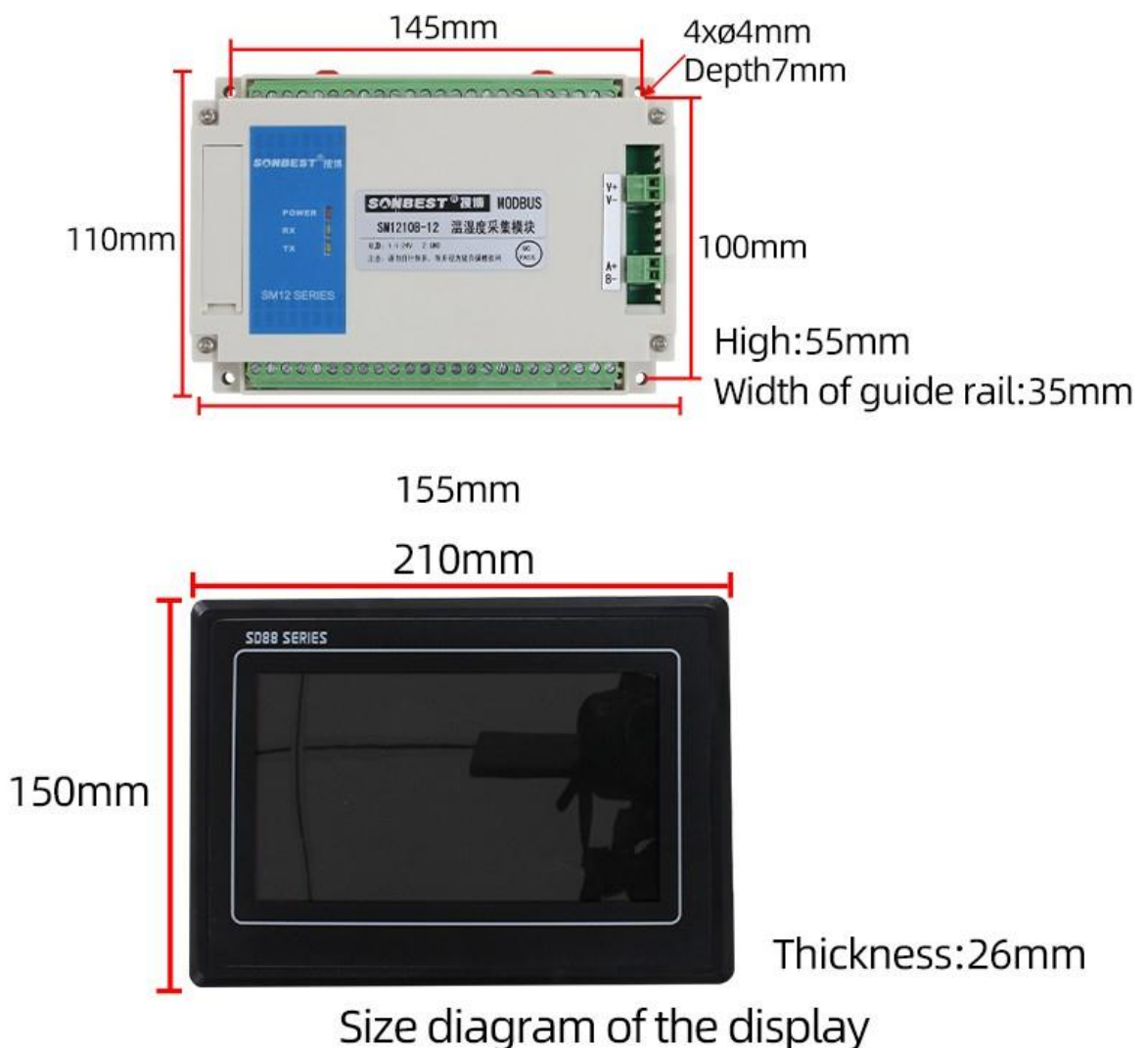
SR8878B using the standard USB, easy access to PLC, DCS and other instruments or systems for monitoring LORA state quantities. The internal use of high-precision sensing core and related devices to ensure high reliability and excellent long-term stability, can be customized

RS232,RS485,CAN,4-20mA,DC0~5V\10V,ZIGBEE,Lora,WIFI,GPRS and other output methods.

### Technical Parameters

Technical parameter	Parameter value
Brand	SONBEST
Wireless signal	LORA
Radio frequency	410~439MHz
Rate level	0~5
Transmit power	5~20dBm
Communication Interface	USB
Default baud rate	9600 8 n 1
Power	DC5V 1A
Running temperature	-30~85℃
Working humidity	5%RH~90%RH

### Product Size



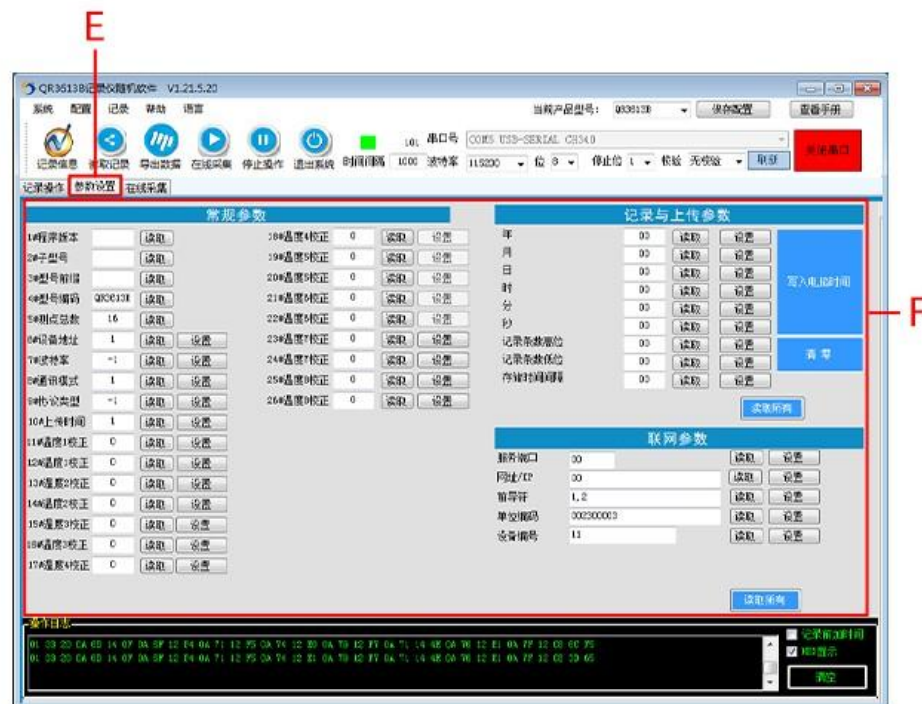
# SOFTWARE INSTRUCTIONS



A: OPEN THE SOFTWARE TO ENTER THE MAIN INTERFACE, SELECT THE CORRESPONDING PRODUCT MODEL TO BUY, SELECT THE END OF THE SAVE SETTINGS, IN CASE THE NEXT OPEN AFTER THE NEED TO RE-SELECT.

B: USE THE USB CONVERTER TO PLUG INTO THE COMPUTER USB 2.0 INTERFACE, WILL AUTOMATICALLY INSTALL THE DRIVER, SUCH AS INSTALLATION FAILURE, CAN BE INSTALLED IN THE DRIVE WIZARD SOFTWARE, AFTER CONNECTING TO THE COMPUTER, SELECT SERIAL PORT: USB-SERIAL CH340(COM5), SET GOOD BAUD RATE CLICK TO OPEN THE SERIAL PORT TO COMPLETE THE CONNECTION.

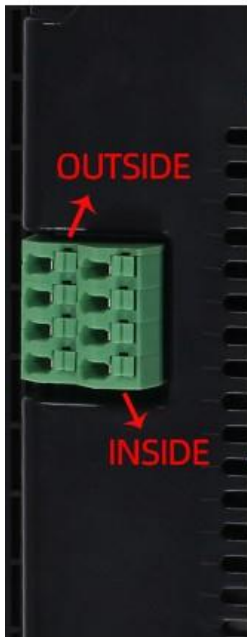
C-D: OPEN THE SERIAL PORT, CLICK ON THE ONLINE ACQUISITION (C), YOU CAN SEE THE REAL-TIME MEASUREMENT DATA (D).



E: GO TO THE PARAMETER SETUP SCREEN

F: A VARIETY OF PARAMETERS CAN BE SET IN THE PARAMETER SETTINGS, TEMPERATURE AND HUMIDITY CORRECTION, BAUD RATE, UPLOAD TIME AND OTHER PARAMETERS, THE RIGHT PARAMETER CAN CLICK ON THE 'READ ALL'; RECORD SET PARAMETERS.

# Wiring mode



## Sensor wiring (outside)    User wiring (inside)

Red	Power supply positive pole	Red	Power supply positive pole
Green	Power supply negative pole	Black	Power supply negative pole
Yellow	A	A+	RS485+
Blue	B	B-	RS485-

**\* NOTE: WHEN WIRING FIRST POWER SUPPLY POSITIVE AND NEGATIVE, AFTER THE SIGNAL LINE**

In the case of broken wires, wire the wires as shown in the figure. If the product itself has no leads, the core color is for reference.

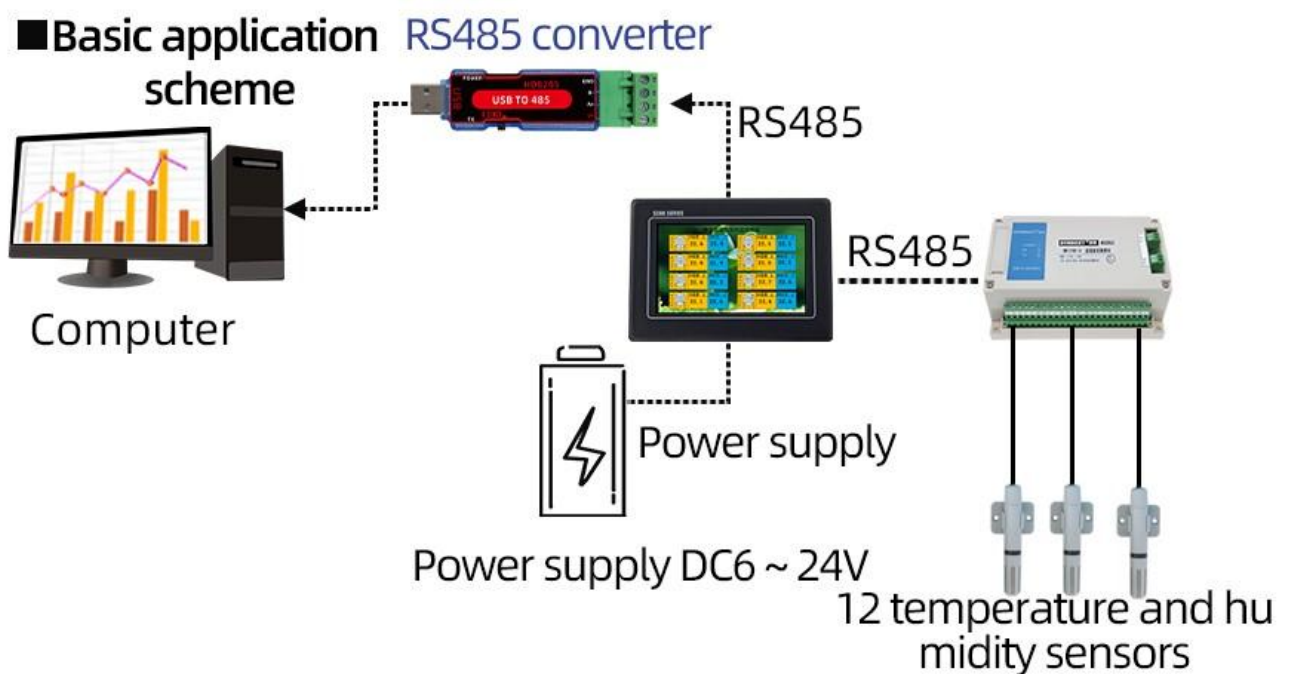
### How to use?

Temperature and humidity color screen recorder can be widely used in grain storage, heat source heat pump, machine shop, library, museum, Greenhouse, archives and other indoor measurement fields



### Application solution

#### ■ Basic application scheme



### Product List



12-channel temperature and humidity color screen recorder



Warm Reminder card



Certificate

### Disclaimer

This document provides all information about the product, does not grant any license to intellectual property, does not express or imply, and prohibits any other means of granting any intellectual property rights, such as the statement of sales terms and conditions of this product, other issues. No liability is assumed. Furthermore, our company makes no warranties, express or implied, regarding the sale and use of this product, including the suitability for the specific use of the product, the marketability or the infringement liability for any patent, copyright or other intellectual property rights, etc. Product specifications and product descriptions may be modified at any time without notice.

### Contact Us

Company: Shanghai Sonbest Industrial Co., Ltd

Address: Building 8, No. 215 North east road, Baoshan District, Shanghai, China

Web: <http://www.sonbest.com>

Web: <http://www.sonbus.com>

SKYPE: soobuu

Email: [sale@sonbest.com](mailto:sale@sonbest.com)

Tel: 86-021-51083595 / 66862055 / 66862075 / 66861077