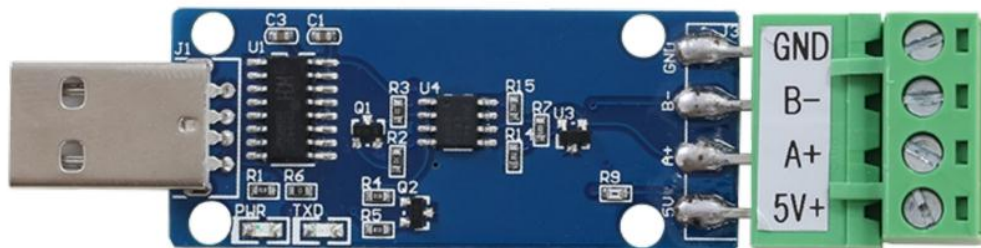


YM815

USB to RS485 TTL converter

User Manual

File Version: V23.5.16



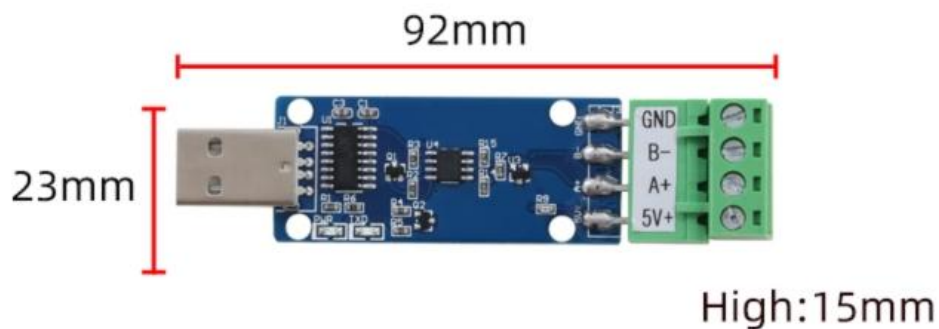
YM815 using the standard USB, easy access to PLC, DCS and other instruments or systems for monitoring RS485 state quantities. The internal use of high-precision sensing core and related devices to ensure high reliability and excellent long-term stability, can be customized

RS232,RS485,CAN,4-20mA,DC0~5V\10V,ZIGBEE,Lora,WIFI,GPRS and other output methods.

Technical Parameters

Technical parameter	Parameter value
RS485	A+ B-
Communication Interface	USB
Default baud rate	9600 8 n 1
Power	DC5V 1A
Running temperature	-30~85℃
Working humidity	5%RH~90%RH

Product Size



In the case of broken wires, wire the wires as shown in the figure. If the product itself has no leads, the core color is for reference.

How to use?

Multi-system compatibility, plug and play

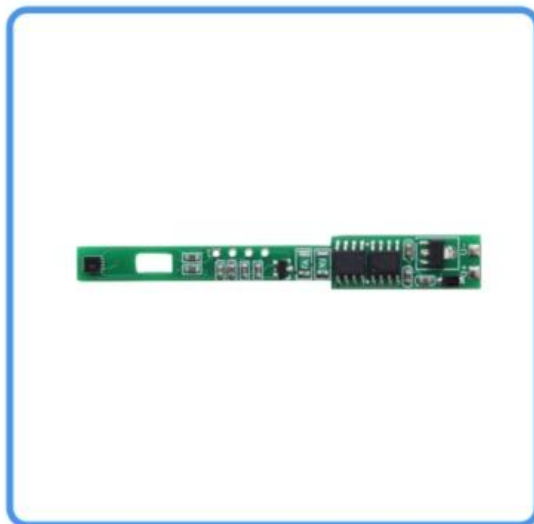
Compatible with Windows Mac OS Linux and so on

Support 115,200 high baud rate

Support STC MCU download



Product List



RS485 temperature and humidity module



Instructions

Disclaimer

This document provides all information about the product, does not grant any license to intellectual property, does not express or imply, and prohibits any other means of granting any intellectual property rights, such as the statement of sales terms and conditions of this product, other issues. No liability is assumed. Furthermore, our company makes no warranties, express or implied, regarding the sale and use of this product, including the suitability for the specific use of the product, the marketability or the infringement liability for any patent, copyright or other intellectual property rights, etc. Product specifications and product descriptions may be modified at any time without notice.

Contact Us

Company: Shanghai Sonbest Industrial Co., Ltd INTOIOT Brand Division

Address: Building 8, No. 215 North east road, Baoshan District, Shanghai, China

Web: <http://www.intoiot.cn>

Web: <http://www.intoiot.com>

SKYPE: soobuu

Email: sale@sonbest.com

Tel: 86-021-51083595 / 66862055 / 66862075 / 66861077